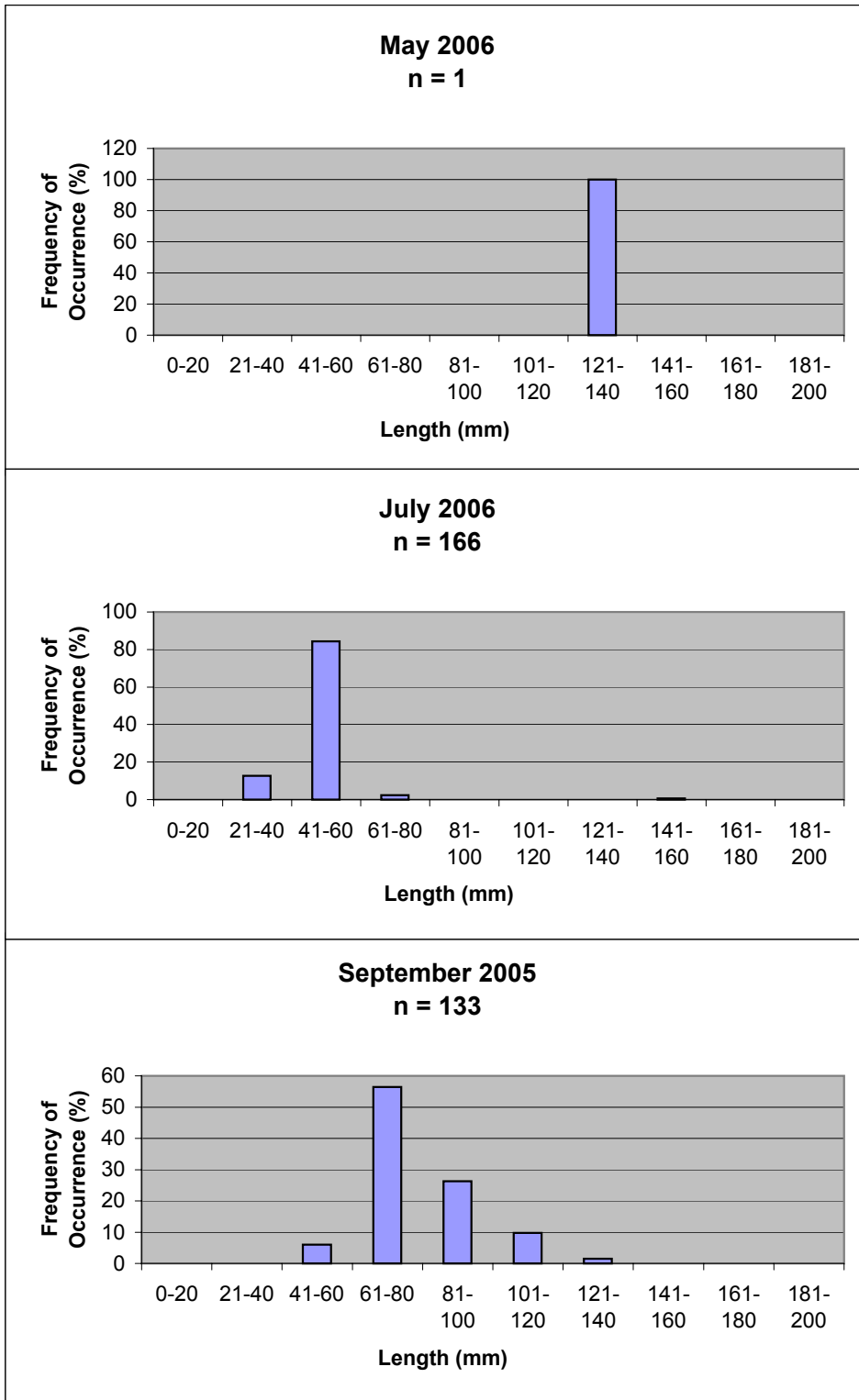


**Length Frequencies of Pacific Cod Captured by Beach Seine in 2005 and 2006**



00634\001\False Pass Report 10-22-2006\Tables and Figures\Fig 4



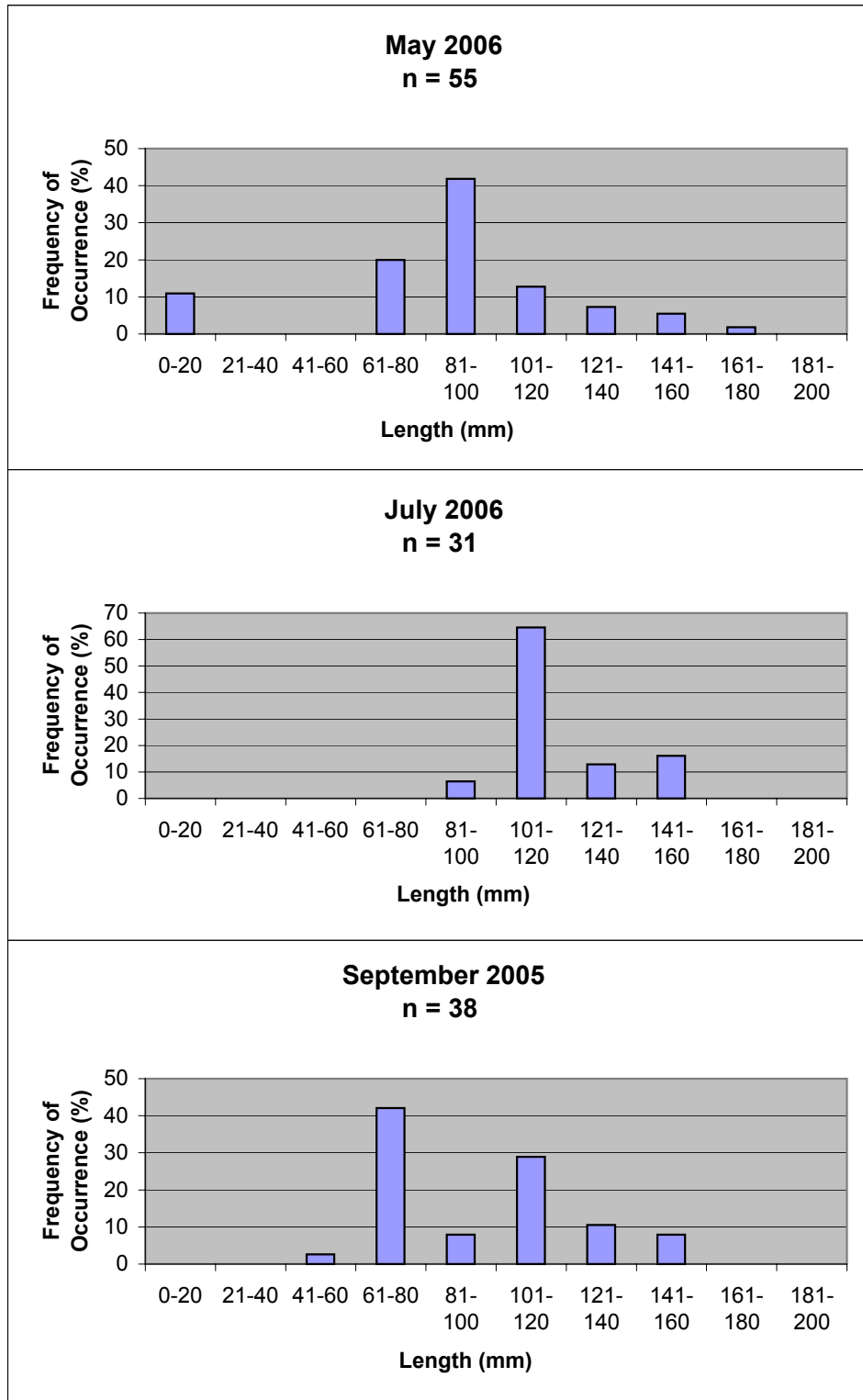
**PENTEC ENVIRONMENTAL**

12634-02

10/06

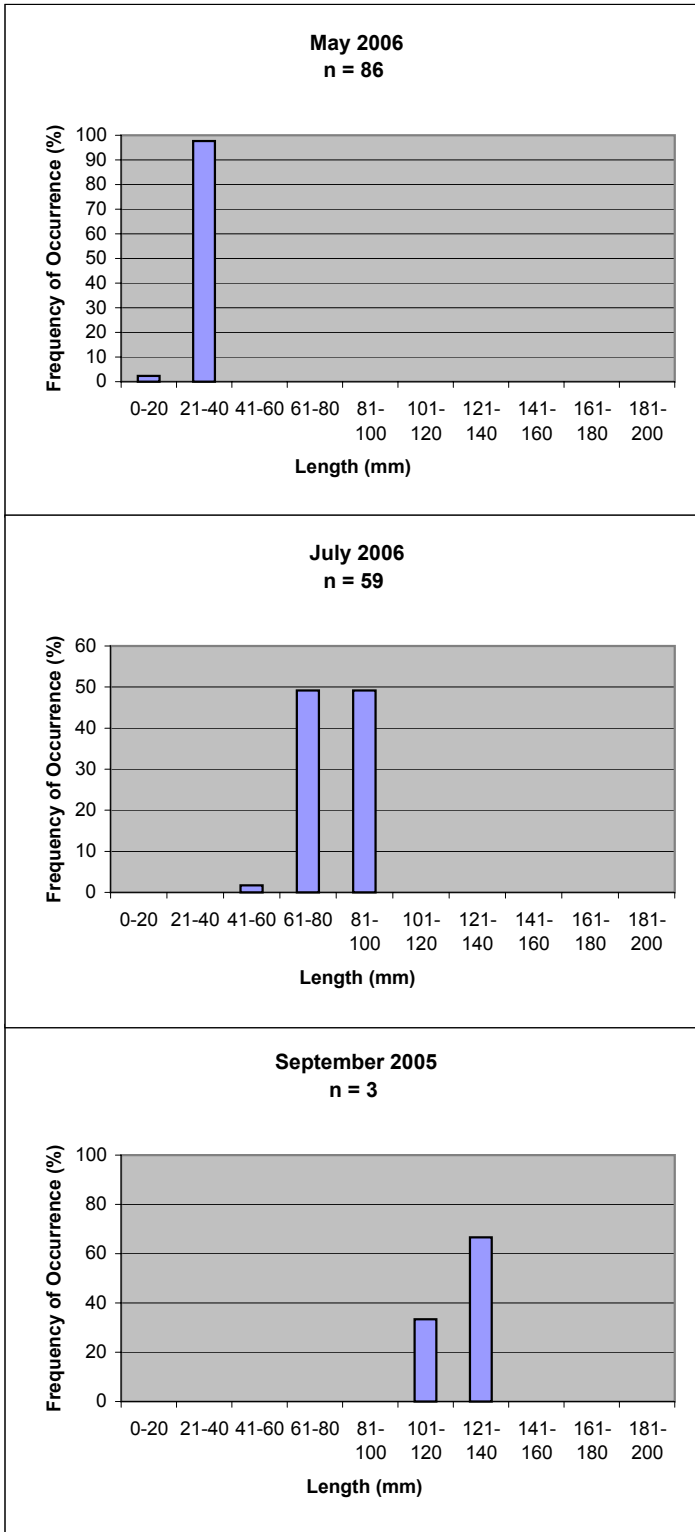
Figure 4

**Length Frequencies of Pacific Sand Lance Captured by Beach Seine in 2005 and 2006**



00634\001\False Pass Report 10-22-2006\Tables and Figures\Fig 5

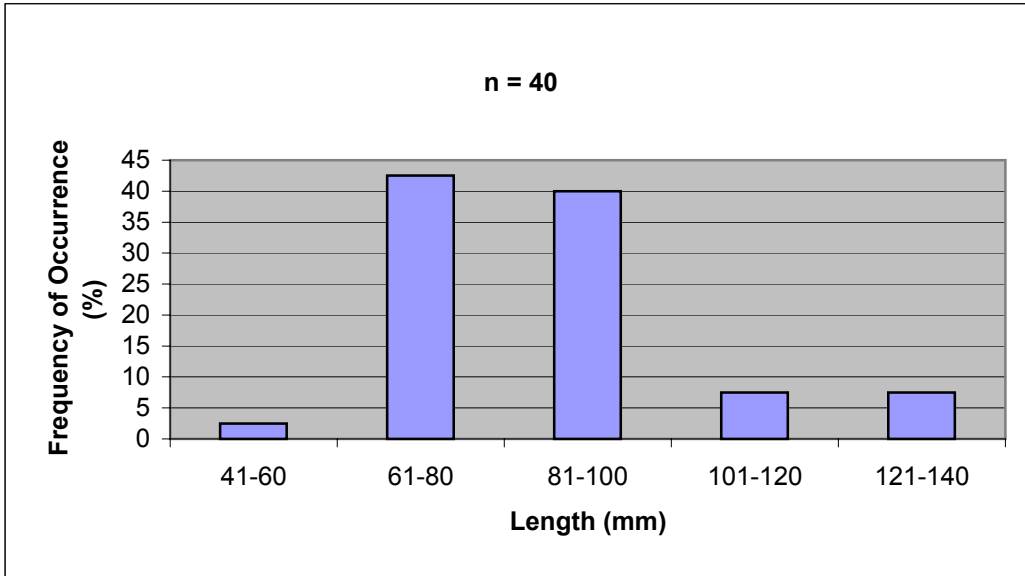
**Length Frequencies of Pink Salmon Captured by Beach Seine in 2005 and 2006**



00634\001\False Pass Report 10-22-2006\Tables and Figures\Fig 6



**Length Frequency of Sockeye Salmon Captured by Beach Seine in July**



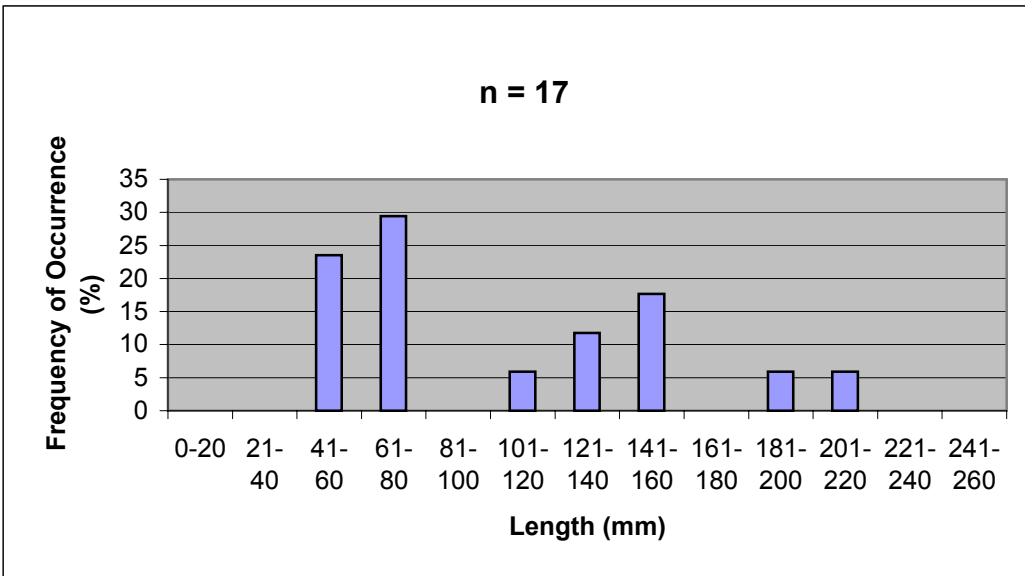
**PENTEC ENVIRONMENTAL**

12634-02

10/06

Figure 7

**Length Frequency of Coho Salmon Captured by Beach Seine in July**



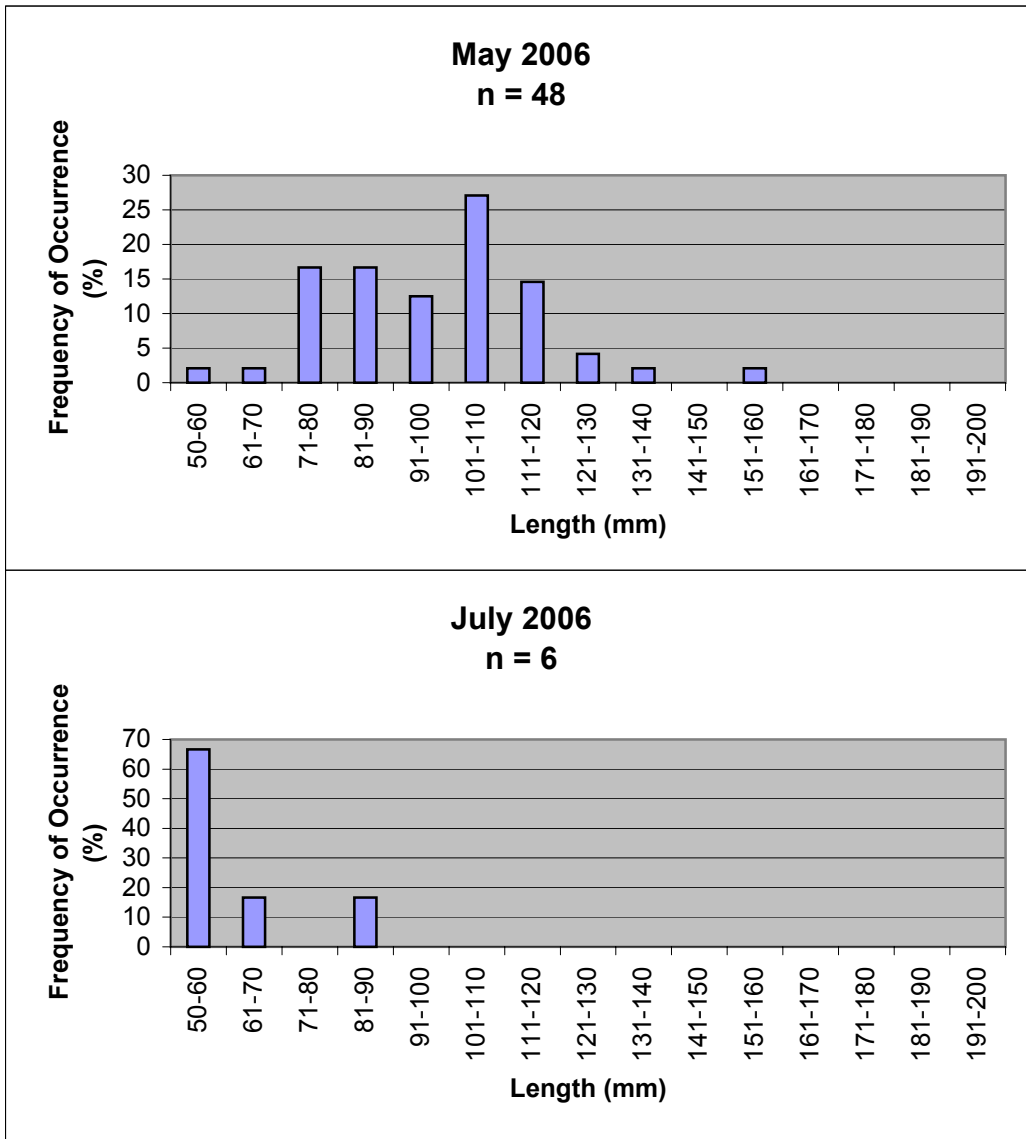
**PENTEC ENVIRONMENTAL**

12634-02

10/06

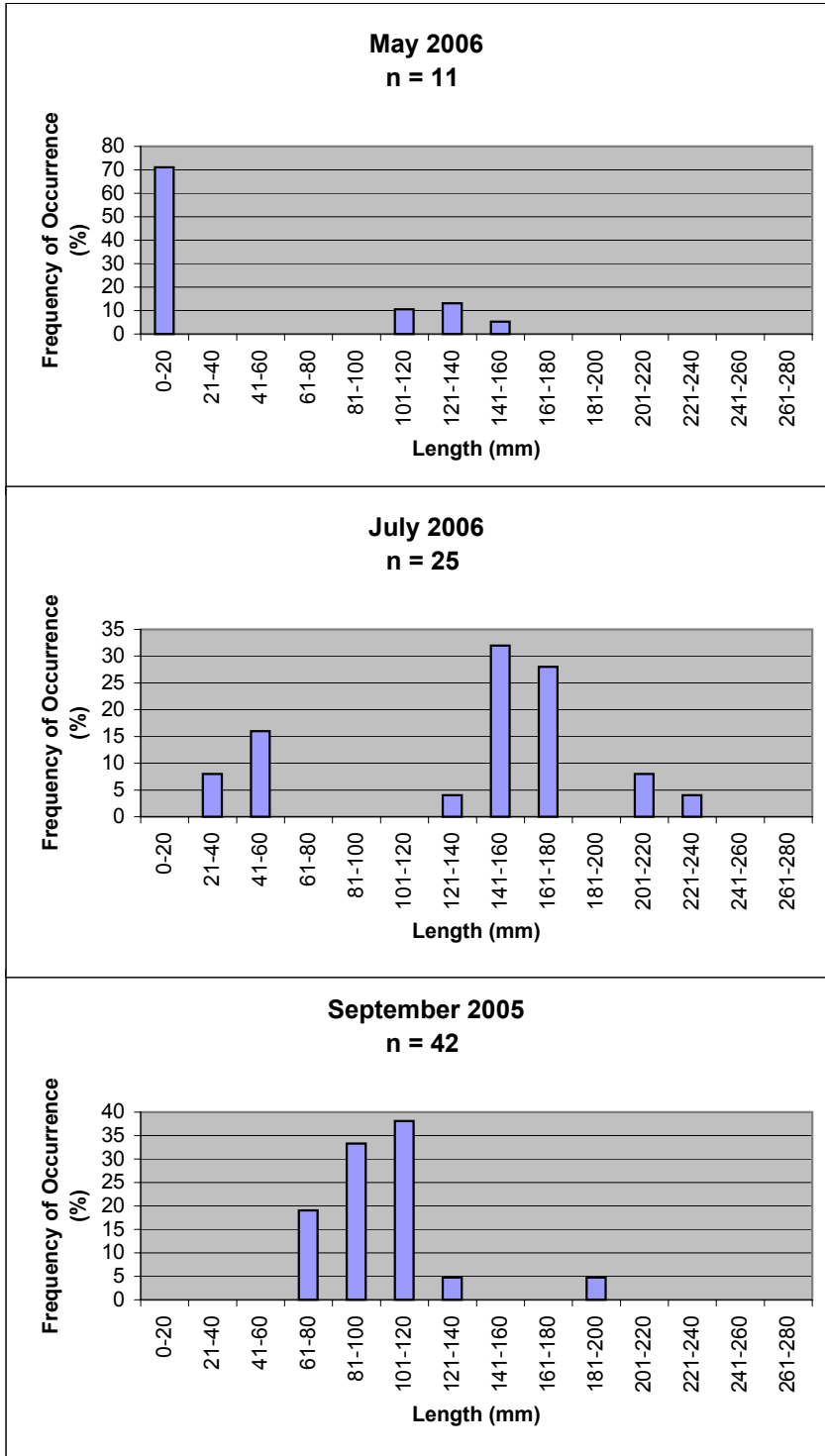
Figure 8

# Length Frequencies of Coho Salmon Captured by Minnow Trap in 2006



00634\001\False Pass Report 10-22-2006\Tables and Figures\Fig 9

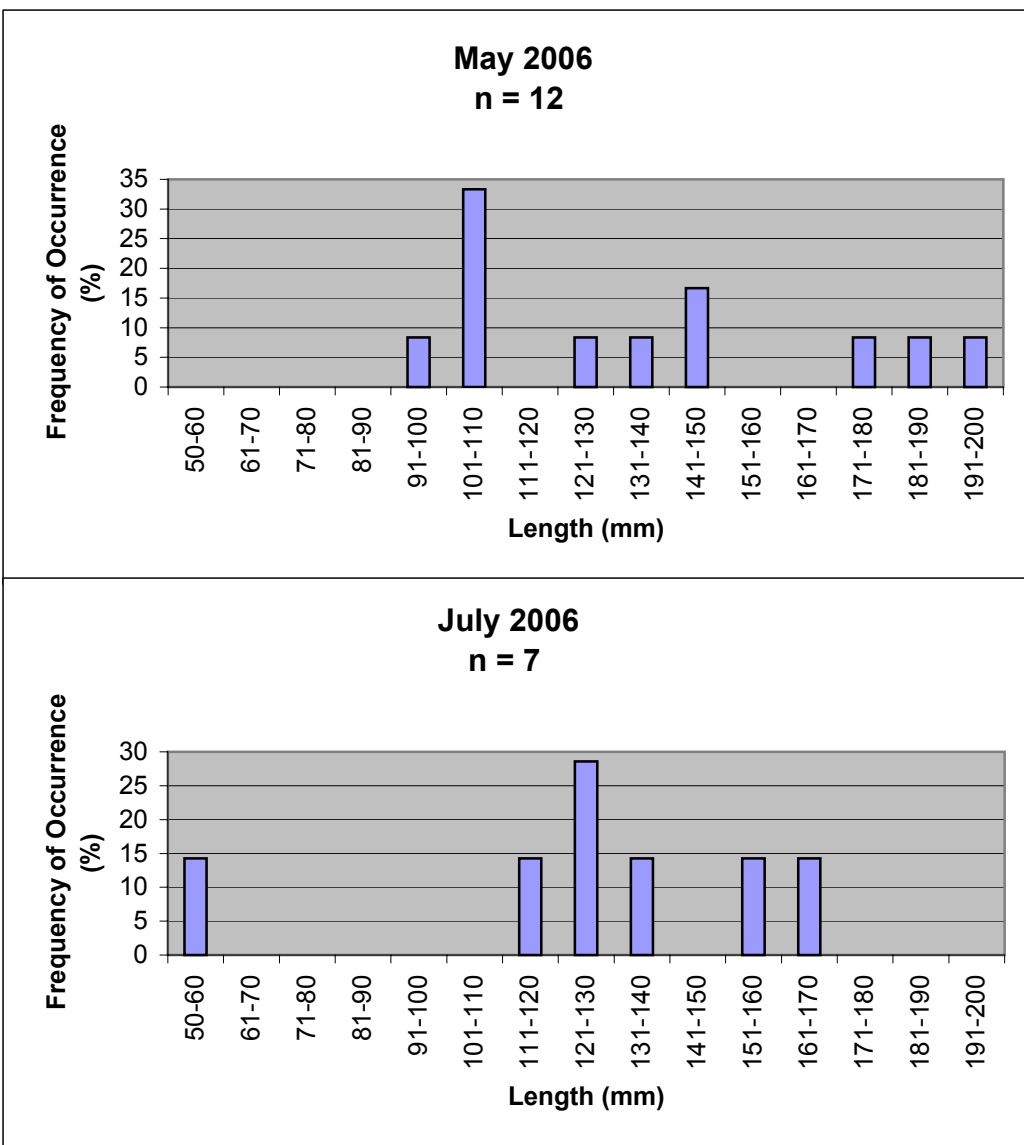
**Length Frequencies of Kelp Greenling Captured by Beach Seine in 2005 and 2006**



00634\001\False Pass Report 10-22-2006\Tables and Figures\Fig 10



## Length Frequencies of Dolly Varden Char Captured by Minnow Trap

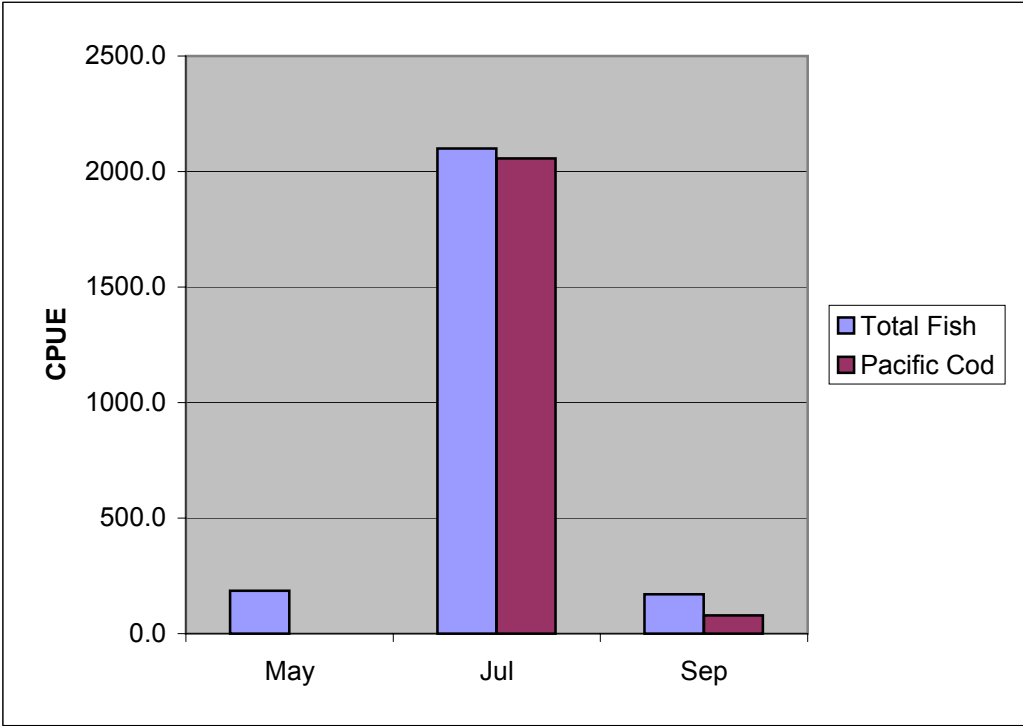


00634\001\False Pass Report 10-22-2006\Tables and Figures\Fig 10



**PENTEC ENVIRONMENTAL**  
12634-02 10/06  
Figure 11

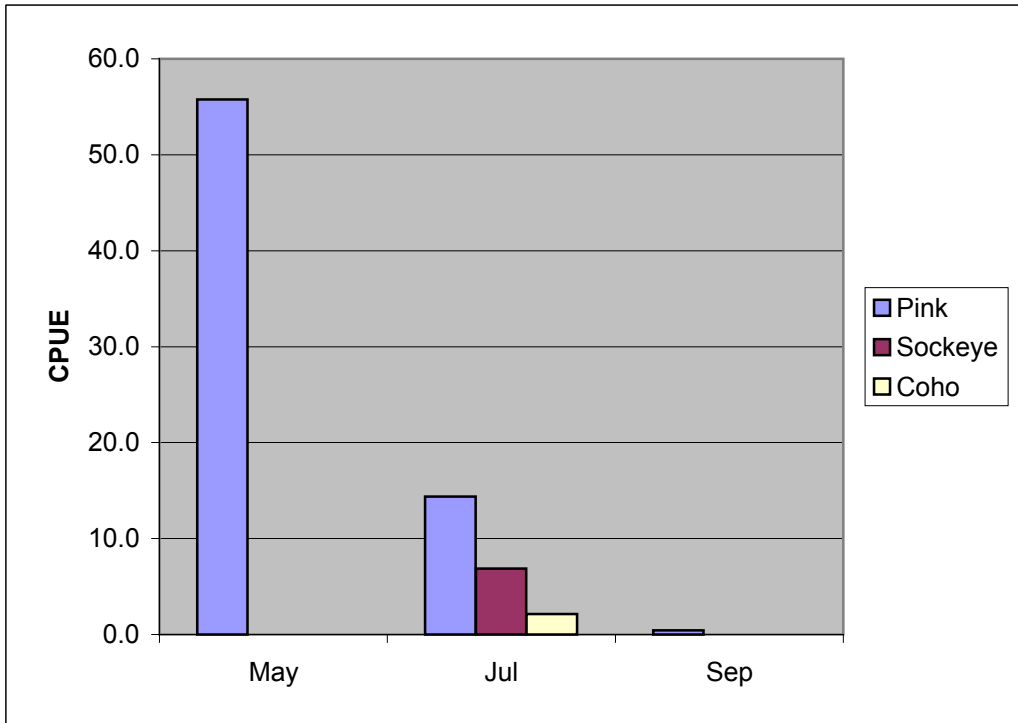
**Comparison of Total Catch and Pacific Cod Catch in 2005 and 2006**



00634\001\False Pass Report 10-22-2006\Tables and Figures\Fig 12



**Seasonal Abundance of Juvenile Salmonids within the Nearshore Study Area**



00634\001\False Pass Report 10-22-2006\Tables and Figures\Fig 13

